

THE ARENA UK SPOOKTACULAR 2022

**SATURDAY 22ND TO
TUESDAY 25TH OF OCTOBER 2022**

**ENTRIES CLOSE ON
THE 17TH OCTOBER**

**EMAIL OFFICE@ARENAUK.COM
FOR FURTHER DETAILS**

WWW.ARENAUK.COM | 01476 591569



SHOW SECRETARY

Show Secretary: Mrs Lauren Eve Fogg, Tel: 07786 398457, Email: entries@arenauk.com

OFFICIALS

Chair of Judges

Sacha Ellison

Lead Officials: Equine America Indoor Championship Arena

Sacha Ellison, Sara Mould, Sara Pheasant

Lead Officials: Outdoor Arena 1

Hayley Rowena Blakemore, Sacha Ellison, Sara Pheasant, Susan Smith

Lead Officials: Outdoor Arena 2

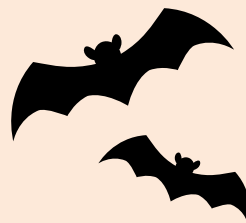
Hayley Rowena Blakemore, Sara Pheasant, Susan Smith

Judges

Joanne Tucker, John Thomson

Course Designers

Amanda Routledge, Colin Ellison, Neil Foster



FIRST AID CHARGES

First Aid is provided by an external provider, please use the link in the More Information section to find out what charges there may be for first aid.

REFUND OF ENTRY FEES

Affiliated shows are required to repay 50 % of the entry fees in respect of all entry cancellations which are received by the Show Organiser not later than 48 hours before noon of the day on which the first affiliated competition of the show is scheduled to start except in those circumstances outlined in Rule 79.5.

SATURDAY 22 OCTOBER 2022

EQUINE AMERICA INDOOR CHAMPIONSHIP ARENA

CLASS 1 - PONY INTRO 75CM OPEN

Single Phase. Speed 325mpm. Start Height 75cm. **DRAWN ORDER**

For registered ponies in Grades: JA, JC & JD to be ridden by junior members. In the event of insufficient entries lower prizes will be withheld. Rule - 76.6

British Showjumping Boots / Leg Protection Ruling applies to this class, in accordance with Rule 102.15.

Failure to comply will incur disqualification.

Prizes: 1st: £40.00, 2nd: £30.00, 3rd: £20.00, 4th: £18.00, 5th: £18.00, Total: £126.00.

Entry Fee = £18.00





CLASS 2 - PONY INTRO 85CM OPEN

Single Phase. Speed 325mpm. Start Height 85cm. **DRAWN ORDER**

For registered ponies in Grades: JA, JC & JD to be ridden by junior members. In the event of insufficient entries lower prizes will be withheld. Rule - 76.6

British Showjumping Boots / Leg Protection Ruling applies to this class, in accordance with Rule 102.15. Failure to comply will incur disqualification.

Prizes: 1st: £40.00, 2nd: £30.00, 3rd: £20.00, 4th: £18.00, 5th: £18.00, Total: £126.00.

Entry Fee = £18.00

CLASS 3 - BLUE CHIP PONY NEWCOMERS/PONY 1.00M OPEN (BOTH TO INC. THE PONY RESTRICTED RIDER 1.00M QUALIFIER)

Rule 406 & 416. Single Phase. Speed 325mpm. Start Height 1.00m. **DRAWN ORDER**

First place rosette kindly sponsored by Blue Chip In the event of 30 or more starters the class will be split, and two sets of prize money awarded. In the event of insufficient entries lower prizes will be withheld. Rule - 76.6

- Blue Chip Pony Newcomers is for registered ponies in Grade JC & JD that have not won a total of 500 points to be ridden by Junior Members.

Qualifies for: Blue Chip Pony Newcomers Second Round. Qualifying period: 1st May-30th April inclusive.

Numbers to qualify: Those ponies that jump a clear round in the First Round, followed by a clear round in the jump-off in at least four Blue Chip Pony Newcomers First Round competitions held in any qualifying period will qualify to compete in a Pony Newcomers Second Round.

- The Open Section is for registered ponies in Grade JA, JC, JD to be ridden by Junior Members. Junior Members, in either the Open or the Newcomers Section who have not won a total of 500 Points are eligible for double clear qualification for the Pony Restricted Rider 1.00m Championship. Riders who have accrued points on the Pony Gold League are not eligible to compete in the Restricted Rider 1.00m Final.

Qualifies for: Four double clears will qualify for the Pony Restricted Rider 1.00m Championship to be held at the British Showjumping National Championships. Qualifying period: 1st May-30th April. Qualification is Pony/rider Combination.

Ponies may compete in one section only.

British Showjumping Boots / Leg Protection Ruling applies to this class, in accordance with Rule 102.15.

Failure to comply will incur disqualification.

Prizes: 1st: £40.00, 2nd: £30.00, 3rd: £20.00, 4th: £18.00, 5th: £18.00, Total: £126.00.

Entry Fee = £18.00

CLASS 4 - HALLOWEEN PUMPKIN PAIRS

Rule 283. Table A. **DRAWN ORDER**

In the event of insufficient entries lower prizes will be withheld. Rule - 76.6

For registered ponies to be ridden by Junior Members.

The time allowed is two minutes in an outdoor arena, 90 seconds indoors. Points are scored in accordance with Rule 277 (Fault and Out). The order of starting must be drawn.

This competition is for teams of two competitors. Both members of the team enter the arena together. The first competitor crosses the starting line and jumps the course until he/she makes an error, continuing to jump the course a second time if still clear as in Rule 277.8.3.

As soon as the competitor makes an error the bell is rung. The other team member (the rescuer) must take over and continue the course at the next obstacle beyond the point at which the error occurred. Failure to do so incurs elimination. Each team member continues to rescue the other whenever an error is made.

At the end of the time allowed the bell is rung and the competitor who is then jumping must cross the finishing line. Failure to do so incurs the elimination of the team.

The competition is decided on points. In the event of equality of points time between the first competitor crossing the starting line and the last competitor crossing the finishing line after the time allowed has been reached decides.





British Showjumping Boots / Leg Protection Ruling applies to this class, in accordance with Rule 102.15. Failure to comply will incur disqualification.

Pre-Entry Drawn Order

Rule 282. DRAWN ORDER

In the event of insufficient entries lower prizes will be withheld. Rule - 76.6

For registered ponies to be ridden by Junior Members.

This competition is for teams of two or more competitors as stated in the schedule. The competition is judged under Table

C and the starting order must be drawn.

All members of the team enter the arena together. The first competitor jumps the course and having jumped the last

obstacle passes the baton (or whip) to the next member of the team, who then jumps the course and so on.

If a competitor makes an error for which the normal penalty is elimination, the bell is rung and the next member of the team takes over and completes the course before starting his/her own round. If the last competitor in the team makes such an error, the first member of the team takes over and so on.

The first competitor only of each team is required to cross the starting line and the last competitor only of each team to cross the finishing line.

The team time is the time from the first competitor crossing the starting line to the last competitor crossing the finishing line minus interrupted time plus time penalties.

British Showjumping Boots / Leg Protection Ruling applies to this class, in accordance with Rule 102.15. Failure to comply will incur disqualification.

In the event of insufficient entries lower prizes will be withheld. Rule - 76.6

Rule 282. Table C.

This competition is for teams of two competitors

Prizes: 1st: £50.00, 2nd: £40.00, 3rd: £35.00, 4th: £20.00, 5th: £20.00, Total: £165.00.

Entry Fee = £20.00



OUTDOOR ARENA 1

CLASS 5 - PONY INTRO 70CM OPEN

Single Phase. Speed 325mpm. Start Height 70cm. **DRAWN ORDER**

For registered ponies in Grades: JA, JC & JD to be ridden by junior members. In the event of insufficient entries lower prizes will be withheld. Rule - 76.6

British Showjumping Boots / Leg Protection Ruling applies to this class, in accordance with Rule 102.15. Failure to comply will incur disqualification.

Prizes: 1st: £40.00, 2nd: £30.00, 3rd: £20.00, 4th: £18.00, 5th: £18.00, Total: £126.00.

Entry Fee = £18.00

CLASS 6 - SPRINGBOARD 128/138CM HANDICAP

Rule 415. Single Phase. Speed 325mpm. Start Heights 90cm / 1.00m. **DRAWN ORDER**

In the event of insufficient entries lower prizes will be withheld. Rule - 76.6

For registered ponies not exceeding 138cms, to be ridden by Junior Members, ages in accordance with Rule 77.12 & 77.13. This competition is open to all but for qualification purposes:

- In the 128cms section, Junior riders are eligible to enter, irrespective of points achieved, before the calendar year in which the age of 10 years is reached. Riders who reach the age of 10 years and over in the current calendar year must not have won a total of 500 points. (As of 01.08.2017 pony/rider combination).
- In the 138cms section, Junior riders are eligible to enter, irrespective of points achieved, before the calendar year in which the age of 12 is reached. Riders who reach the age 12 years and over in the current calendar year must not have won a total of 850 points. (As of 01.08.2017 pony/rider combination). Junior Riders are not eligible to enter the 138cms section until the calendar year in which their 8th birthday is reached. Ponies 128cm & under are not permitted to enter the 138cm section.





Once riders have competed at or have 'ever' qualified for RIHS or HOYS on any height pony they are no longer eligible to compete in the Final.

Pony/rider combinations who have accrued points on the Pony Gold League are not eligible to compete in the final of this competition.

Qualifies for: Springboard Final.

Qualifying Period: 1st February -31st January.

Numbers to Qualify: Four double clears to qualify for the Final. Qualification is pony/rider combination. Ponies in the class must go into the jump-off and go clear to gain its double clear round qualification. In order to compete in the Final, all qualified competitors ages must be in accordance with the Rule 77.12 & 77.13 in the year of the Final.

No rider may compete more than three ponies in the same section.

British Showjumping Boots / Leg Protection Ruling applies to this class, in accordance with Rule 102.15. Failure to comply will incur disqualification.

Prizes: 1st: £40.00, 2nd: £30.00, 3rd: £20.00, 4th: £18.00, 5th: £18.00, Total: £126.00.

Entry Fee = £18.00



CLASS 7A - OUTDOOR ARENA 1 - PONY BRITISH NOVICE FIRST ROUND

Rule 410. Single Phase. Speed 325mpm. Start Height 80cm. **DRAWN ORDER**

Horses (or ponies in pony competitions) may compete in one section only. In the event of insufficient entries lower prizes will be withheld. Rule - 76.6

For registered Ponies in Grade JD, that have not won a total of 150 Points to be ridden by Junior Members, ages as per Rule 77.12/77.13.

Qualifies for: Pony British Novice Championship Second Rounds.

Qualifying period 1st May-30th April inclusive.

Numbers to qualify: Those ponies that jump a clear round in the first round, followed by a clear round in the jump-off, in at least four Pony British Novice First Round competitions held in the qualifying period will qualify to compete in a Pony British Novice Second Rounds. Qualification period: May – April yearly (subject to revision).

If combined with an open: In the event of 15 or more starters this class will be split with two sets of prize money. Ponies may enter one section only.

British Showjumping Boots / Leg Protection Ruling applies to this class, in accordance with Rule 102.15. Failure to comply will incur disqualification.

Prizes: 1st: £40.00, 2nd: £30.00, 3rd: £20.00, 4th: £18.00, 5th: £18.00, Total: £126.00.

Entry Fee = £18.00

CLASS 7B - OUTDOOR ARENA 1 - PONY INTRO 80CM OPEN

Rule 410. Single Phase. Speed 325mpm. Start Height 80cm. **DRAWN ORDER**

For registered ponies in Grades: JA, JC & JD to be ridden by junior members. Horses (or ponies in pony competitions) may compete in one section only. In the event of insufficient entries lower prizes will be withheld. Rule - 76.6

British Showjumping Boots / Leg Protection Ruling applies to this class, in accordance with Rule 102.15. Failure to comply will incur disqualification.

Prizes: 1st: £40.00, 2nd: £30.00, 3rd: £20.00, 4th: £18.00, 5th: £18.00, Total: £126.00.

Entry Fee = £18.00



OUTDOOR ARENA 2

CLASS 8A - PONY DISCOVERY FIRST ROUND

Rule 408. Single Phase. Speed 325mpm. Start Height 90cm. **DRAWN ORDER**

Horses (or ponies in pony competitions) may compete in one section only. In the event of insufficient entries lower prizes will be withheld. Rule - 76.6

For registered ponies in Grades JD and JC that have not won a total of 300 Points to be ridden by Junior Members, ages as per Rule 77.12/77.13.

Qualifies for: Pony Discovery Second Round.

Qualifying period: 1st May-30th April inclusive.





Numbers to qualify: Those ponies which jump a clear round in the first round, followed by a clear round in the jump-off in at least four Pony Discovery First Round competitions held in any qualifying period will qualify to compete in a Pony Discovery Second Round.

If combined with an open: In the event of 30 or more starters the class will be split with two sets of prize money. Ponies may enter one section only.

British Showjumping Boots / Leg Protection Ruling applies to this class, in accordance with Rule 102.15.

Failure to comply will incur disqualification.

Prizes: 1st: £40.00, 2nd: £30.00, 3rd: £20.00, 4th: £18.00, 5th: £18.00, Total: £126.00.

Entry Fee = £18.00



CLASS 8B - PONY INTRO 90CM OPEN

Rule 408. Single Phase. Speed 325mpm. Start Height 90cm. **DRAWN ORDER**

For registered ponies in Grades: JA, JC & JD to be ridden by junior members. Horses (or ponies in pony competitions) may compete in one section only. In the event of insufficient entries lower prizes will be withheld. Rule - 76.6

British Showjumping Boots / Leg Protection Ruling applies to this class, in accordance with Rule 102.15.

Failure to comply will incur disqualification.

Prizes: 1st: £40.00, 2nd: £30.00, 3rd: £20.00, 4th: £18.00, 5th: £18.00, Total: £126.00.

Entry Fee = £18.00

CLASS 9 - 1.05M OPEN

Single Phase. Speed 325mpm. Start Height 1.05m. **DRAWN ORDER**

For registered ponies in Grades: JA, JC & JD to be ridden by junior members. In the event of insufficient entries lower prizes will be withheld. Rule - 76.6

British Showjumping Boots / Leg Protection Ruling applies to this class, in accordance with Rule 102.15.

Failure to comply will incur disqualification.

Prizes: 1st: £40.00, 2nd: £30.00, 3rd: £20.00, 4th: £18.00, 5th: £18.00, Total: £126.00.

Entry Fee = £18.00

CLASS 10 - PONY FOXHUNTER - FIRST ROUND/1.10M OPEN (BOTH TO INC. THE PONY RESTRICTED RIDER 1.10M QUALIFIER)

Rule 404 & 417. Single Phase. Speed 325mpm. Start Height 1.10m. **DRAWN ORDER**

In the event of 30 or more starters the class will be split, and two sets of prize money awarded. Horses (or ponies in pony competitions) may compete in one section only. In the event of insufficient entries lower prizes will be withheld. Rule - 76.6

- Pony Foxhunter First Round is for ponies in Grades JD and JC that have not won a total of 700 Points to be ridden by Junior Members.

Qualifies for: Pony Foxhunter Second Round. Qualifying period: 1st May-30th April inclusive. Numbers to qualify: Those ponies that jump a clear round in the first round, followed by a clear round in the jump-off in at least four First Round competitions held in the qualifying period will qualify to compete in the Second Round.

- The Open Section is for registered ponies in Grade JA, JC, JD to be ridden by Junior Members. Junior Members, in either the Open or the Foxhunter Section, who have not won more than a total of 350 Points in the previous calendar year are eligible for double clear qualification for the Pony Restricted Rider 1.10m Championship. Riders who have accrued points on the Pony Gold League are not eligible to compete in the Restricted Rider 1.10m Final.

Qualifying period: 1st May-30th April inclusive. Qualifies for: Four double clears will qualify for the Pony Restricted Rider 1.10m Championship to be held at the British Showjumping National Championships.

Qualification is pony/rider combination.





British Showjumping Boots / Leg Protection Ruling applies to this class, in accordance with Rule 102.15.
Failure to comply will incur disqualification.
Prizes: 1st: £50.00, 2nd: £35.00, 3rd: £25.00, 4th: £20.00, 5th: £20.00, Total: £150.00.
Entry Fee = £20.00



CLASS 11 - WINTER 128CM FIRST ROUND/WINTER 138CM FIRST ROUND

Rule 514 & 512. Table A7. Speed 325mpm. Start Heights 1.05m / 1.10m. **DRAWN ORDER**

Horses (or ponies in pony competitions) may compete in one section only. In the event of insufficient entries lower prizes will be withheld. Rule - 76.6

- 138cm Section:

For registered ponies that have won 30 Points or more exceeding 128cms but not exceeding 138cms to be ridden by Junior Members (ages in accordance with Rule 77.12). Pony riders are not eligible to compete before the calendar year in which their 8th birthday is reached.

Qualifies for: Winter 138cms Second Round Competition.

Qualifying period: September to January.

Numbers to qualify: Two double clears (subject to revision).

- 128cm Section:

For registered ponies that have won 30 Points or more not exceeding 128cms to be ridden by Junior Members (ages in accordance with Rule 77.13). Junior riders are not eligible to compete before the calendar year in which their 8th birthday is reached.

Qualifies for: Winter 128cms Second Round Competition.

Qualifying period: September to January.

Numbers to qualify: Two double clears to qualify (subject to revision).

Dispensation will be given to run the Winter 128cms and Winter 138cms First Rounds as a handicap competition. If run as a Handicap, pony riders will be given dispensation to ride up to three ponies in each height section. This class will split in the event of 20 starters or more and two sets of prize money awarded. No rider may ride more than three ponies in the same competition, in accordance with rule 77.6.

British Showjumping Boots / Leg Protection Ruling applies to this class, in accordance with Rule 102.15.

Failure to comply will incur disqualification.

Prizes: 1st: £50.00, 2nd: £35.00, 3rd: £25.00, 4th: £20.00, 5th: £20.00, Total: £150.00.

Entry Fee = £20.00



SUNDAY 23 OCTOBER 2022

EQUINE AMERICA INDOOR CHAMPIONSHIP ARENA - 8:00AM

CLASS 12A - PONY BRITISH NOVICE FIRST ROUND

Rule 410. Single Phase. Speed 325mpm. Start Height 80cm. **DRAWN ORDER**

Horses (or ponies in pony competitions) may compete in one section only. In the event of insufficient entries lower prizes will be withheld. Rule - 76.6

For registered Ponies in Grade JD, that have not won a total of 150 Points to be ridden by Junior Members, ages as per Rule 77.12/77.13.

Qualifies for: Pony British Novice Championship Second Rounds.

Qualifying period 1st May-30th April inclusive.

Numbers to qualify: Those ponies that jump a clear round in the first round, followed by a clear round in the jump-off, in at least four Pony British Novice First Round competitions held in the qualifying period will qualify to compete in a Pony British Novice Second Rounds. Qualification period: May – April yearly (subject to revision).





If combined with an open: In the event of 15 or more starters this class will be split with two sets of prize money. Ponies may enter one section only.

British Showjumping Boots / Leg Protection Ruling applies to this class, in accordance with Rule 102.15.

Failure to comply will incur disqualification.

Prizes: 1st: £40.00, 2nd: £30.00, 3rd: £20.00, 4th: £18.00, 5th: £18.00, Total: £126.00.

Entry Fee = £18.00

CLASS 12B - PONY INTRO 80CM OPEN

Rule 410. Single Phase. Speed 325mpm. Start Height 80cm. **DRAWN ORDER**

For registered ponies in Grades: JA, JC & JD to be ridden by junior members. Horses (or ponies in pony competitions) may compete in one section only. In the event of insufficient entries lower prizes will be withheld. Rule - 76.6

British Showjumping Boots / Leg Protection Ruling applies to this class, in accordance with Rule 102.15.

Failure to comply will incur disqualification.

Prizes: 1st: £40.00, 2nd: £30.00, 3rd: £20.00, 4th: £18.00, 5th: £18.00, Total: £126.00.

Entry Fee = £18.00



CLASS 13 - PONY INTRO 95CM OPEN

Single Phase. Speed 325mpm. Start Height 95cm. **DRAWN ORDER**

For registered ponies in Grades: JA, JC & JD to be ridden by junior members. In the event of insufficient entries lower prizes will be withheld. Rule - 76.6

British Showjumping Boots / Leg Protection Ruling applies to this class, in accordance with Rule 102.15.

Failure to comply will incur disqualification.

Prizes: 1st: £40.00, 2nd: £30.00, 3rd: £20.00, 4th: £18.00, 5th: £18.00, Total: £126.00.

Entry Fee = £18.00

CLASS 14 - JUNIOR 1.05M OPEN

Single Phase. Speed 325mpm. Start Height 1.05m. **DRAWN ORDER**

For registered ponies in Grades: JA, JC & JD to be ridden by junior members. In the event of insufficient entries lower prizes will be withheld. Rule - 76.6

British Showjumping Boots / Leg Protection Ruling applies to this class, in accordance with Rule 102.15.

Failure to comply will incur disqualification.

Prizes: 1st: £50.00, 2nd: £35.00, 3rd: £30.00, 4th: £20.00, 5th: £20.00, Total: £155.00.

Entry Fee = £20.00

CLASS 15 - PONY ACCUMULATOR

Rule 274. Table A. Speed 350mpm. Start Height 80cm. **DRAWN ORDER**

In the event of insufficient entries lower prizes will be withheld. Rule - 76.6

The order of starting must be drawn.

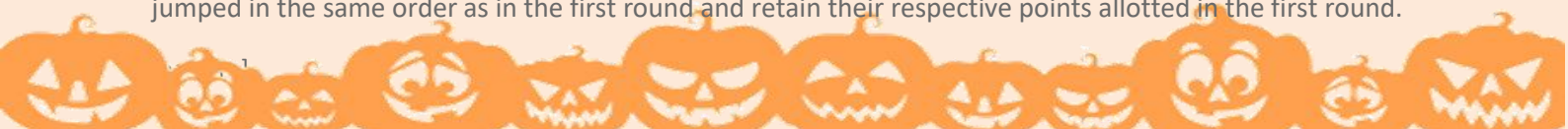
This competition takes place over six, eight or 10 obstacles which are progressively more difficult. No combination obstacles are allowed. The progressive difficulty is not solely due to the height and spread of the obstacles, but also to the difficulty of the track.

Points are awarded as follows:

One point for obstacle No. 1 cleared, two points for No. 2, three points for No. 3 etc. with total of 21, 36 or 55 points.

No point is awarded for an obstacle knocked down. Faults other than knock-downs are penalised as for Table A and any of these faults, including time faults, are converted into points and deducted from any jumping points scored.

In the event of equality of points for first place, there will be a jump-off against the clock over a shortened course, over obstacles that may be increased in height and/or spread. The obstacles in the jump-off must be jumped in the same order as in the first round and retain their respective points allotted in the first round.





This competition may also take place directly against the clock.

For the last obstacle of the course, an alternative obstacle may be provided, of which one part may be designated the Joker. The Joker must be more difficult than the alternative obstacle and carry double points. If the Joker is knocked down, the points must be deducted from the total.

British Showjumping Boots / Leg Protection Ruling applies to this class, in accordance with Rule 102.15.

Failure to comply will incur disqualification.

Prizes: 1st: £50.00, 2nd: £35.00, 3rd: £25.00, 4th: £20.00, 5th: £20.00, Total: £150.00.

Entry Fee = £20.00

OUTDOOR ARENA 1 – 8:00AM

CLASS 16 – PONY INTRO 75CM OPEN



Single Phase. Speed 325mpm. Start Height 75cm. **DRAWN ORDER**

For registered ponies in Grades: JA, JC & JD to be ridden by junior members. In the event of insufficient entries lower prizes will be withheld. Rule - 76.6

British Showjumping Boots / Leg Protection Ruling applies to this class, in accordance with Rule 102.15.

Failure to comply will incur disqualification.

Prizes: 1st: £40.00, 2nd: £30.00, 3rd: £20.00, 4th: £18.00, 5th: £18.00, Total: £126.00.

Entry Fee = £18.00

CLASS 17 – PONY INTRO 85CM OPEN

Single Phase. Speed 325mpm. Start Height 85cm. **DRAWN ORDER**

For registered ponies in Grades: JA, JC & JD to be ridden by junior members. In the event of insufficient entries lower prizes will be withheld. Rule - 76.6

British Showjumping Boots / Leg Protection Ruling applies to this class, in accordance with Rule 102.15.

Failure to comply will incur disqualification.

Prizes: 1st: £40.00, 2nd: £30.00, 3rd: £20.00, 4th: £18.00, 5th: £18.00, Total: £126.00.

Entry Fee = £18.00

CLASS 18A – PONY DISCOVERY FIRST ROUND

Rule 408. Single Phase. Speed 325mpm. Start Height 90cm. **DRAWN ORDER**

Horses (or ponies in pony competitions) may compete in one section only. In the event of insufficient entries lower prizes will be withheld. Rule - 76.6

For registered ponies in Grades JD and JC that have not won a total of 300 Points to be ridden by Junior Members, ages as per Rule 77.12/77.13.

Qualifies for: Pony Discovery Second Round.

Qualifying period: 1st May-30th April inclusive.

Numbers to qualify: Those ponies which jump a clear round in the first round, followed by a clear round in the jump-off in at least four Pony Discovery First Round competitions held in any qualifying period will qualify to compete in a Pony Discovery Second Round.

If combined with an open: In the event of 30 or more starters the class will be split with two sets of prize money. Ponies may enter one section only.

British Showjumping Boots / Leg Protection Ruling applies to this class, in accordance with Rule 102.15.

Failure to comply will incur disqualification.

Prizes: 1st: £40.00, 2nd: £30.00, 3rd: £20.00, 4th: £18.00, 5th: £18.00, Total: £126.00.

Entry Fee = £18.00





CLASS 18B - INTRO 90CM OPEN

Rule 408. Single Phase. Speed 325mpm. Start Height 90cm. **DRAWN ORDER**

For registered ponies in Grades: JA, JC & JD to be ridden by junior members. Horses (or ponies in pony competitions) may compete in one section only. In the event of insufficient entries lower prizes will be withheld. Rule - 76.6

British Showjumping Boots / Leg Protection Ruling applies to this class, in accordance with Rule 102.15.

Failure to comply will incur disqualification.

Prizes: 1st: £40.00, 2nd: £30.00, 3rd: £20.00, 4th: £18.00, 5th: £18.00, Total: £126.00.

Entry Fee = £18.00

CLASS 19 - SPRINGBOARD 128/138CM HANDICAP

Rule 415. Single Phase. Speed 325mpm. Start Heights 90cm / 1.00m. **DRAWN ORDER**

In the event of insufficient entries lower prizes will be withheld. Rule - 76.6

For registered ponies not exceeding 138cms, to be ridden by Junior Members, ages in accordance with Rule 77.12 & 77.13. This competition is open to all but for qualification purposes:

- In the 128cms section, Junior riders are eligible to enter, irrespective of points achieved, before the calendar year in which the age of 10 years is reached. Riders who reach the age of 10 years and over in the current calendar year must not have won a total of 500 points. (as of 01.08.2017 pony/rider combination).
- In the 138cms section, Junior riders are eligible to enter, irrespective of points achieved, before the calendar year in which the age of 12 is reached. Riders who reach the age 12 years and over in the current calendar year must not have won a total of 850 points. (as of 01.08.2017 pony/rider combination). Junior Riders are not eligible to enter the 138cms section until the calendar year in which their 8th birthday is reached. Ponies 128cm & under are not permitted to enter the 138cm section.

Once riders have competed at or have 'ever' qualified for RIHS or HOYS on any height pony they are no longer eligible to compete in the Final.

Pony/rider combinations who have accrued points on the Pony Gold League are not eligible to compete in the final of this competition.

Qualifies for: Springboard Final.

Qualifying Period: 1st February -31st January.

Numbers to Qualify: Four double clears to qualify for the Final. Qualification is pony/rider combination.

Ponies in the class must go into the jump-off and go clear to gain its double clear round qualification. In order to compete in the Final, all qualified competitors ages must be in accordance with the Rule 77.12 & 77.13 in the year of the Final.

No rider may compete more than three ponies in the same section.

British Showjumping Boots / Leg Protection Ruling applies to this class, in accordance with Rule 102.15.

Failure to comply will incur disqualification.

Prizes: 1st: £40.00, 2nd: £30.00, 3rd: £20.00, 4th: £18.00, 5th: £18.00, Total: £126.00.

Entry Fee = £18.00



OUTDOOR ARENA 2

CLASS 20 - PONY FOXHUNTER - FIRST ROUND/110M OPEN (BOTH TO INC. THE PONY RESTRICTED RIDER 110M QUALIFIER)

Rule 404 & 417. Single Phase. Speed 325mpm. Start Height 1.10m. **DRAWN ORDER**

In the event of 30 or more starters the class will be split, and two sets of prize money awarded. Horses (or ponies in pony competitions) may compete in one section only. In the event of insufficient entries lower prizes will be withheld. Rule - 76.6

- Pony Foxhunter First Round is for ponies in Grades JD and JC that have not won a total of 700 Points to be ridden by Junior Members.





Qualifies for: Pony Foxhunter Second Round. Qualifying period: 1st May-30th April inclusive. Numbers to qualify: Those ponies that jump a clear round in the first round, followed by a clear round in the jump-off in at least four First Round competitions held in the qualifying period will qualify to compete in the Second Round.

- The Open Section is for registered ponies in Grade JA, JC, JD to be ridden by Junior Members. Junior Members, in either the Open or the Foxhunter Section, who have not won more than a total of 350 Points in the previous calendar year are eligible for double clear qualification for the Pony Restricted Rider 1.10m Championship. Riders who have accrued points on the Pony Gold League are not eligible to compete in the Restricted Rider 1.10m Final.

Qualifying period: 1st May-30th April inclusive. Qualifies for: Four double clears will qualify for the Pony Restricted Rider 1.10m Championship to be held at the British Showjumping National Championships. Qualification is pony/rider combination.

British Showjumping Boots / Leg Protection Ruling applies to this class, in accordance with Rule 102.15. Failure to comply will incur disqualification.

Prizes: 1st: £50.00, 2nd: £35.00, 3rd: £25.00, 4th: £20.00, 5th: £20.00, Total: £150.00.

Entry Fee = £20.00

CLASS 21 - BLUE CHIP PONY NEWCOMERS/PONY 1.00M OPEN (BOTH TO INC. THE PONY RESTRICTED RIDER 1.00M QUALIFIER)

Rule 406 & 416. Table A7. Speed 325mpm. Start Height 1.00m. **DRAWN ORDER**

First place rosette kindly sponsored by Blue Chip In the event of 30 or more starters the class will be split, and two sets of prize money awarded. In the event of insufficient entries lower prizes will be withheld. Rule - 76.6

- Blue Chip Pony Newcomers is for registered ponies in Grade JC & JD that have not won a total of 500 points to be ridden by Junior Members.

Qualifies for: Blue Chip Pony Newcomers Second Round. Qualifying period: 1st May-30th April inclusive.

Numbers to qualify: Those ponies that jump a clear round in the First Round, followed by a clear round in the jump-off in at least four Blue Chip Pony Newcomers First Round competitions held in any qualifying period will qualify to compete in a Pony Newcomers Second Round.

- The Open Section is for registered ponies in Grade JA, JC, JD to be ridden by Junior Members. Junior Members, in either the Open or the Newcomers Section who have not won a total of 500 Points are eligible for double clear qualification for the Pony Restricted Rider 1.00m Championship. Riders who have accrued points on the Pony Gold League are not eligible to compete in the Restricted Rider 1.00m Final.

Qualifies for: Four double clears will qualify for the Pony Restricted Rider 1.00m Championship to be held at the British Showjumping National Championships. Qualifying period: 1st May-30th April. Qualification is pony/rider Combination.

Ponies may compete in one section only.

British Showjumping Boots / Leg Protection Ruling applies to this class, in accordance with Rule 102.15. Failure to comply will incur disqualification.

Prizes: 1st: £40.00, 2nd: £30.00, 3rd: £20.00, 4th: £18.00, 5th: £18.00, Total: £126.00.

Entry Fee = £18.00

CLASS 22 - WINTER 128CM FIRST ROUND/WINTER 138CM FIRST ROUND

Rule 514 & 512. Table A7. Speed 325mpm. Start Heights 1.05m / 1.10m. **DRAWN ORDER**

Horses (or ponies in pony competitions) may compete in one section only.

- 138cm Section:

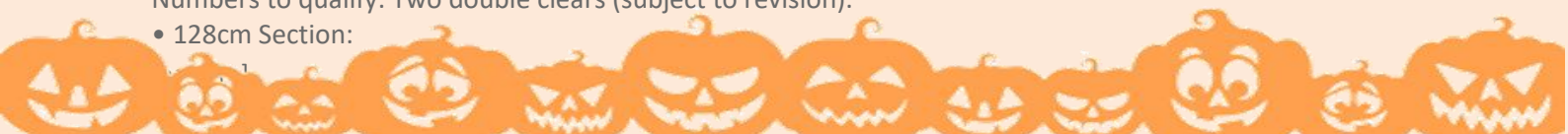
For registered ponies that have won 30 Points or more exceeding 128cms but not exceeding 138cms to be ridden by Junior Members (ages in accordance with Rule 77.12). Pony riders are not eligible to compete before the calendar year in which their 8th birthday is reached.

Qualifies for: Winter 138cms Second Round Competition.

Qualifying period: September to January.

Numbers to qualify: Two double clears (subject to revision).

- 128cm Section:





For registered ponies that have won 30 Points or more not exceeding 128cms to be ridden by Junior Members (ages in accordance with Rule 77.13). Junior riders are not eligible to compete before the calendar year in which their 8th birthday is reached.

Qualifies for: Winter 128cms Second Round Competition.

Qualifying period: September to January.

Numbers to qualify: Two double clears to qualify (subject to revision).

Dispensation will be given to run the Winter 128cms and Winter 138cms First Rounds as a handicap competition. If run as a Handicap, pony riders will be given dispensation to ride up to three ponies in each height section. This class will split in the event of 20 starters or more and two sets of prize money awarded.

No rider may ride more than three ponies in the same competition, in accordance with rule 77.6.

British Showjumping Boots / Leg Protection Ruling applies to this class, in accordance with Rule 102.15.

Failure to comply will incur disqualification.

Prizes: 1st: £50.00, 2nd: £35.00, 3rd: £25.00, 4th: £20.00, 5th: £20.00, Total: £150.00.

Entry Fee = £20.00



MONDAY 24 OCTOBER 2022

EQUINE AMERICA INDOOR CHAMPIONSHIP ARENA – 8:00AM

CLASS 23 – PONY FOXHUNTER – FIRST ROUND/1.10M OPEN (BOTH TO INC. THE PONY RESTRICTED RIDER 1.10M QUALIFIER)

Rule 404 & 417. Single Phase. Speed 325mpm. Start Height 1.10m. **DRAWN ORDER**

In the event of 30 or more starters the class will be split, and two sets of prize money awarded. Horses (or ponies in pony competitions) may compete in one section only. In the event of insufficient entries lower prizes will be withheld. Rule - 76.6

- Pony Foxhunter First Round is for ponies in Grades JD and JC that have not won a total of 700 Points to be ridden by Junior Members.

Qualifies for: Pony Foxhunter Second Round. Qualifying period: 1st May-30th April inclusive. Numbers to qualify: Those ponies that jump a clear round in the first round, followed by a clear round in the jump-off in at least four First Round competitions held in the qualifying period will qualify to compete in the Second Round.

- The Open Section is for registered ponies in Grade JA, JC, JD to be ridden by Junior Members. Junior Members, in either the Open or the Foxhunter Section, who have not won more than a total of 350 Points in the previous calendar year are eligible for double clear qualification for the Pony Restricted Rider 1.10m Championship. Riders who have accrued points on the Pony Gold League are not eligible to compete in the Restricted Rider 1.10m Final

Qualifying period: 1st May-30th April inclusive. Qualifies for: Four double clears will qualify for the Pony Restricted Rider 1.10m Championship to be held at the British Showjumping National Championships.

Qualification is pony/rider combination.

British Showjumping Boots / Leg Protection Ruling applies to this class, in accordance with Rule 102.15.

Failure to comply will incur disqualification.

Prizes: 1st: £50.00, 2nd: £35.00, 3rd: £25.00, 4th: £20.00, 5th: £20.00, Total: £150.00.

Entry Fee = £20.00



CLASS 24 – PONY INTRO 95CM OPEN

Single Phase. Speed 325mpm. Start Height 95cm. **DRAWN ORDER**

For registered ponies in Grades: JA, JC & JD to be ridden by junior members. In the event of insufficient entries lower prizes will be withheld. Rule - 76.6

British Showjumping Boots / Leg Protection Ruling applies to this class, in accordance with Rule 102.15.

Failure to comply will incur disqualification.





Prizes: 1st: £40.00, 2nd: £30.00, 3rd: £20.00, 4th: £18.00, 5th: £18.00, Total: £126.00.

Entry Fee = £18.00

CLASS 25 - PONY INTRO 85CM OPEN

Single Phase. Speed 325mpm. Start Height 85cm. **DRAWN ORDER**

For registered ponies in Grades: JA, JC & JD to be ridden by junior members. In the event of insufficient entries lower prizes will be withheld. Rule - 76.6

British Showjumping Boots / Leg Protection Ruling applies to this class, in accordance with Rule 102.15.

Failure to comply will incur disqualification.

Prizes: 1st: £40.00, 2nd: £30.00, 3rd: £20.00, 4th: £18.00, 5th: £18.00, Total: £126.00.

Entry Fee = £18.00

CLASS 26 - BLUE CHIP PONY NEWCOMERS/PONY 1.00M OPEN (BOTH TO INC. THE PONY RESTRICTED RIDER 1.00M QUALIFIER)

Rule 406 & 416. Single Phase. Speed 325mpm. Start Height 1.00m. **DRAWN ORDER**

First place rosette kindly sponsored by Blue Chip In the event of 30 or more starters the class will be split, and two sets of prize money awarded. In the event of insufficient entries lower prizes will be withheld. Rule - 76.6

- Blue Chip Pony Newcomers is for registered ponies in Grade JC & JD that have not won a total of 500 points to be ridden by Junior Members.

Qualifies for: Blue Chip Pony Newcomers Second Round. Qualifying period: 1st May-30th April inclusive.

Numbers to qualify: Those ponies that jump a clear round in the First Round, followed by a clear round in the jump-off in at least four Blue Chip Pony Newcomers First Round competitions held in any qualifying period will qualify to compete in a Pony Newcomers Second Round.

- The Open Section is for registered ponies in Grade JA, JC, JD to be ridden by Junior Members. Junior Members, in either the Open or the Newcomers Section who have not won a total of 500 Points are eligible for double clear qualification for the Pony Restricted Rider 1.00m Championship. Riders who have accrued points on the Pony Gold League are not eligible to compete in the Restricted Rider 1.00m Final.

Qualifies for: Four double clears will qualify for the Pony Restricted Rider 1.00m Championship to be held at the British Showjumping National Championships. Qualifying period: 1st May-30th April. Qualification is pony/rider Combination.

Ponies may compete in one section only.

British Showjumping Boots / Leg Protection Ruling applies to this class, in accordance with Rule 102.15.

Failure to comply will incur disqualification.

Prizes: 1st: £40.00, 2nd: £30.00, 3rd: £20.00, 4th: £18.00, 5th: £18.00, Total: £126.00.

Entry Fee = £18.00

OUTDOOR ARENA 1 - 8:30AM

CLASS 28A - PONY BRITISH NOVICE FIRST ROUND

Rule 410. Single Phase. Speed 325mpm. Start Height 80cm. **DRAWN ORDER**

Horses (or ponies in pony competitions) may compete in one section only. In the event of insufficient entries lower prizes will be withheld. Rule - 76.6

For registered Ponies in Grade JD, that have not won a total of 150 Points to be ridden by Junior Members, ages as per Rule 77.12/77.13.

Qualifies for: Pony British Novice Championship Second Rounds.

Qualifying period 1st May-30th April inclusive.

Numbers to qualify: Those ponies that jump a clear round in the first round, followed by a clear round in the jump-off, in at least four Pony British Novice First Round competitions held in the qualifying period will qualify to compete in a Pony British Novice Second Rounds. Qualification period: May – April yearly (subject to revision).





If combined with an open: In the event of 15 or more starters this class will be split with two sets of prize money. Ponies may enter one section only.

British Showjumping Boots / Leg Protection Ruling applies to this class, in accordance with Rule 102.15.

Failure to comply will incur disqualification.

Prizes: 1st: £40.00, 2nd: £30.00, 3rd: £20.00, 4th: £18.00, 5th: £18.00, Total: £126.00.

Entry Fee = £18.00

CLASS 28B - PONY INTRO 80CM OPEN

Rule 410. Single Phase. Speed 325mpm. Start Height 80cm. **DRAWN ORDER**

For registered ponies in Grades: JA, JC & JD to be ridden by junior members. Horses (or ponies in pony competitions) may compete in one section only. In the event of insufficient entries lower prizes will be withheld. Rule - 76.6

British Showjumping Boots / Leg Protection Ruling applies to this class, in accordance with Rule 102.15.

Failure to comply will incur disqualification.

Prizes: 1st: £40.00, 2nd: £30.00, 3rd: £20.00, 4th: £18.00, 5th: £18.00, Total: £126.00.

Entry Fee = £18.00

CLASS 29A - PONY DISCOVERY FIRST ROUND

Rule 408. Single Phase. Speed 325mpm. Start Height 90cm. **DRAWN ORDER**

Horses (or ponies in pony competitions) may compete in one section only. In the event of insufficient entries lower prizes will be withheld. Rule - 76.6

For registered ponies in Grades JD and JC that have not won a total of 300 Points to be ridden by Junior Members, ages as per Rule 77.12/77.13.

Qualifies for: Pony Discovery Second Round.

Qualifying period: 1st May-30th April inclusive.

Numbers to qualify: Those ponies which jump a clear round in the first round, followed by a clear round in the jump-off in at least four Pony Discovery First Round competitions held in any qualifying period will qualify to compete in a Pony Discovery Second Round.

If combined with an open: In the event of 30 or more starters the class will be split with two sets of prize money. Ponies may enter one section only.

British Showjumping Boots / Leg Protection Ruling applies to this class, in accordance with Rule 102.15.

Failure to comply will incur disqualification.

Prizes: 1st: £40.00, 2nd: £30.00, 3rd: £20.00, 4th: £18.00, 5th: £18.00, Total: £126.00.

Entry Fee = £18.00

CLASS 29B - PONY INTRO 90CM OPEN

Rule 408. Single Phase. Speed 325mpm. Start Height 90cm. **DRAWN ORDER**

For registered ponies in Grades: JA, JC & JD to be ridden by junior members. Horses (or ponies in pony competitions) may compete in one section only. In the event of insufficient entries lower prizes will be withheld. Rule - 76.6

British Showjumping Boots / Leg Protection Ruling applies to this class, in accordance with Rule 102.15.

Failure to comply will incur disqualification.

Prizes: 1st: £40.00, 2nd: £30.00, 3rd: £20.00, 4th: £18.00, 5th: £18.00, Total: £126.00.

Entry Fee = £18.00



ponies

CLASS 30 - SPRINGBOARD 128/138CM HANDICAP

Rule 415. Table A7. Speed 325mpm. Start Heights 90cm / 1.00m. **DRAWN ORDER**

In the event of insufficient entries lower prizes will be withheld. Rule - 76.6

For registered ponies not exceeding 138cms, to be ridden by Junior Members, ages in accordance with Rule 77.12 & 77.13. This competition is open to all but for qualification purposes:





- In the 128cms section, Junior riders are eligible to enter, irrespective of points achieved, before the calendar year in which the age of 10 years is reached. Riders who reach the age of 10 years and over in the current calendar year must not have won a total of 500 points. (As of 01.08.2017 pony/rider combination).

- In the 138cms section, Junior riders are eligible to enter, irrespective of points achieved, before the calendar year in which the age of 12 is reached. Riders who reach the age 12 years and over in the current calendar year must not have won a total of 850 points. (As of 01.08.2017 pony/rider combination). Junior Riders are not eligible to enter the 138cms section until the calendar year in which their 8th birthday is reached. Ponies 128cm & under are not permitted to enter the 138cm section.

Once riders have competed at or have 'ever' qualified for RIHS or HOYS on any height pony they are no longer eligible to compete in the Final.

Pony/rider combinations who have accrued points on the Pony Gold League are not eligible to compete in the final of this competition.

Qualifies for: Springboard Final.

Qualifying Period: 1st February -31st January.

Numbers to Qualify: Four double clears to qualify for the Final. Qualification is pony/rider combination.

Ponies in the class must go into the jump-off and go clear to gain its double clear round qualification. In order to compete in the Final, all qualified competitors ages must be in accordance with the Rule 77.12 & 77.13 in the year of the Final.

No rider may compete more than three ponies in the same section.

British Showjumping Boots / Leg Protection Ruling applies to this class, in accordance with Rule 102.15.

Failure to comply will incur disqualification.

Prizes: 1st: £40.00, 2nd: £30.00, 3rd: £20.00, 4th: £18.00, 5th: £18.00, Total: £126.00.

Entry Fee = £18.00

OUTDOOR ARENA 2 – 8:30AM



CLASS 31 – PONY INTRO 70CM OPEN

Single Phase. Speed 325mpm. Start Height 70cm. **DRAWN ORDER**

For registered ponies in Grades: JA, JC & JD to be ridden by junior members. In the event of insufficient entries lower prizes will be withheld. Rule - 76.6

British Showjumping Boots / Leg Protection Ruling applies to this class, in accordance with Rule 102.15.

Failure to comply will incur disqualification.

Prizes: 1st: £40.00, 2nd: £30.00, 3rd: £20.00, 4th: £18.00, 5th: £18.00, Total: £126.00.

Entry Fee = £18.00

CLASS 32 – WINTER 128CM FIRST ROUND/WINTER 138CM FIRST ROUND

Rule 514 & 512. Table A7. Speed 325mpm. Start Heights 1.05m / 1.10m. **DRAWN ORDER**

Horses (or ponies in pony competitions) may compete in one section only. In the event of insufficient entries lower prizes will be withheld. Rule - 76.6

- 138cm Section:

For registered ponies that have won 30 Points or more exceeding 128cms but not exceeding 138cms to be ridden by Junior Members (ages in accordance with Rule 77.12). Pony riders are not eligible to compete before the calendar year in which their 8th birthday is reached.

Qualifies for: Winter 138cms Second Round Competition.

Qualifying period: September to January.

Numbers to qualify: Two double clears (subject to revision).

- 128cm Section:

For registered ponies that have won 30 Points or more not exceeding 128cms to be ridden by Junior Members (ages in accordance with Rule 77.13). Junior riders are not eligible to compete before the calendar year in which their 8th birthday is reached.

Qualifies for: Winter 128cms Second Round Competition.





Qualifying period: September to January.

Numbers to qualify: Two double clears to qualify (subject to revision).

Dispensation will be given to run the Winter 128cms and Winter 138cms First Rounds as a handicap competition. If run as a Handicap, pony riders will be given dispensation to ride up to three ponies in each height section. This class will split in the event of 20 starters or more and two sets of prize money awarded. No rider may ride more than three ponies in the same competition, in accordance with rule 77.6.

British Showjumping Boots / Leg Protection Ruling applies to this class, in accordance with Rule 102.15.

Failure to comply will incur disqualification.

Prizes: 1st: £50.00, 2nd: £35.00, 3rd: £25.00, 4th: £20.00, 5th: £20.00, Total: £150.00.

Entry Fee = £20.00



CLASS 33 - JUNIOR 1.05M OPEN

Single Phase. Speed 325mpm. Start Height 1.05m. **DRAWN ORDER**

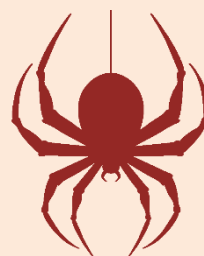
For registered ponies in Grades: JA, JC & JD to be ridden by junior members. In the event of insufficient entries lower prizes will be withheld. Rule - 76.6

British Showjumping Boots / Leg Protection Ruling applies to this class, in accordance with Rule 102.15.

Failure to comply will incur disqualification.

Prizes: 1st: £50.00, 2nd: £35.00, 3rd: £30.00, 4th: £20.00, 5th: £20.00, Total: £155.00.

Entry Fee = £20.00



TUESDAY 25 OCTOBER 2022

EQUINE AMERICA INDOOR CHAMPIONSHIP ARENA - 8:30AM

CLASS 34 - PONY INTRO 75CM OPEN

Single Phase. Speed 325mpm. Start Height 75cm. **DRAWN ORDER**

For registered ponies in Grades: JA, JC & JD to be ridden by junior members. In the event of insufficient entries lower prizes will be withheld. Rule - 76.6

British Showjumping Boots / Leg Protection Ruling applies to this class, in accordance with Rule 102.15.

Failure to comply will incur disqualification.

Prizes: 1st: £50.00, 2nd: £38.00, 3rd: £25.00, 4th: £20.00, 5th: £20.00, Total: £153.00.

Entry Fee = £20.00

CLASS 35 - PONY INTRO 85CM OPEN

Single Phase. Speed 325mpm. Start Height 85cm. **DRAWN ORDER**

For registered ponies in Grades: JA, JC & JD to be ridden by junior members. In the event of insufficient entries lower prizes will be withheld. Rule - 76.6

British Showjumping Boots / Leg Protection Ruling applies to this class, in accordance with Rule 102.15.

Failure to comply will incur disqualification.

Prizes: 1st: £50.00, 2nd: £35.00, 3rd: £30.00, 4th: £20.00, 5th: £20.00, Total: £155.00.

Entry Fee = £20.00



CLASS 36 - PONY INTRO 95CM OPEN

Single Phase. Speed 325mpm. Start Height 95cm. **DRAWN ORDER**

For registered ponies in Grades: JA, JC & JD to be ridden by junior members. In the event of insufficient entries lower prizes will be withheld. Rule - 76.6

British Showjumping Boots / Leg Protection Ruling applies to this class, in accordance with Rule 102.15.

Failure to comply will incur disqualification.

Prizes: 1st: £50.00, 2nd: £38.00, 3rd: £25.00, 4th: £20.00, 5th: £20.00, Total: £153.00.





Entry Fee = £20.00

CLASS 37 – BLUE CHIP PONY NEWCOMERS/PONY 1.00M OPEN (BOTH TO INC. THE PONY RESTRICTED RIDER 1.00M QUALIFIER)

Rule 406 & 416. Single Phase. Speed 325mpm. Start Height 1.00m. **DRAWN ORDER**

First place rosette kindly sponsored by Blue Chip In the event of 30 or more starters the class will be split, and two sets of prize money awarded. In the event of insufficient entries lower prizes will be withheld. Rule - 76.6

- Blue Chip Pony Newcomers is for registered ponies in Grade JC & JD that have not won a total of 500 points to be ridden by Junior Members.

Qualifies for: Blue Chip Pony Newcomers Second Round. Qualifying period: 1st May-30th April inclusive.

Numbers to qualify: Those ponies that jump a clear round in the First Round, followed by a clear round in the jump-off in at least four Blue Chip Pony Newcomers First Round competitions held in any qualifying period will qualify to compete in a Pony Newcomers Second Round.

- The Open Section is for registered ponies in Grade JA, JC, JD to be ridden by Junior Members. Junior Members, in either the Open or the Newcomers Section who have not won a total of 500 Points are eligible for double clear qualification for the Pony Restricted Rider 1.00m Championship. Riders who have accrued points on the Pony Gold League are not eligible to compete in the Restricted Rider 1.00m Final.

Qualifies for: Four double clears will qualify for the Pony Restricted Rider 1.00m Championship to be held at the British Showjumping National Championships. Qualifying period: 1st May-30th April. Qualification is pony/rider Combination.

Ponies may compete in one section only.

British Showjumping Boots / Leg Protection Ruling applies to this class, in accordance with Rule 102.15.

Failure to comply will incur disqualification.

Prizes: 1st: £50.00, 2nd: £38.00, 3rd: £25.00, 4th: £20.00, 5th: £20.00, Total: £153.00..

Entry Fee = £20.00

OUTDOOR ARENA 1 – 8:30AM



CLASS 38A – PONY BRITISH NOVICE FIRST ROUND

Rule 410. Single Phase. Speed 325mpm. Start Height 80cm. **DRAWN ORDER**

Horses (or ponies in pony competitions) may compete in one section only. In the event of insufficient entries lower prizes will be withheld. Rule - 76.6

For registered Ponies in Grade JD, that have not won a total of 150 Points to be ridden by Junior Members, ages as per Rule 77.12/77.13.

Qualifies for: Pony British Novice Championship Second Rounds.

Qualifying period 1st May-30th April inclusive.

Numbers to qualify: Those ponies that jump a clear round in the first round, followed by a clear round in the jump-off, in at least four Pony British Novice First Round competitions held in the qualifying period will qualify to compete in a Pony British Novice Second Rounds. Qualification period: May – April yearly (subject to revision).

If combined with an open: In the event of 15 or more starters this class will be split with two sets of prize money. Ponies may enter one section only.

British Showjumping Boots / Leg Protection Ruling applies to this class, in accordance with Rule 102.15.

Failure to comply will incur disqualification.

Prizes: 1st: £40.00, 2nd: £30.00, 3rd: £20.00, 4th: £18.00, 5th: £18.00, Total: £126.00.

Entry Fee = £18.00

CLASS 38B – PONY INTRO 80CM OPEN

Rule 410. Single Phase. Speed 325mpm. Start Height 80cm. **DRAWN ORDER**





For registered ponies in Grades: JA, JC & JD to be ridden by junior members. Horses (or ponies in pony competitions) may compete in one section only. In the event of insufficient entries lower prizes will be withheld. Rule - 76.6

British Showjumping Boots / Leg Protection Ruling applies to this class, in accordance with Rule 102.15.

Failure to comply will incur disqualification.

Prizes: 1st: £40.00, 2nd: £30.00, 3rd: £20.00, 4th: £18.00, 5th: £18.00, Total: £126.00.

Entry Fee = £18.00



CLASS 39A - PONY DISCOVERY FIRST ROUND

Rule 408. Single Phase. Speed 325mpm. Start Height 90cm. **DRAWN ORDER**

Horses (or ponies in pony competitions) may compete in one section only. In the event of insufficient entries lower prizes will be withheld. Rule - 76.6

For registered ponies in Grades JD and JC that have not won a total of 300 Points to be ridden by Junior Members, ages as per Rule 77.12/77.13.

Qualifies for: Pony Discovery Second Round.

Qualifying period: 1st May-30th April inclusive.

Numbers to qualify: Those ponies which jump a clear round in the first round, followed by a clear round in the jump-off in at least four Pony Discovery First Round competitions held in any qualifying period will qualify to compete in a Pony Discovery Second Round.

If combined with an open: In the event of 30 or more starters the class will be split with two sets of prize money. Ponies may enter one section only.

British Showjumping Boots / Leg Protection Ruling applies to this class, in accordance with Rule 102.15. Failure to comply will incur disqualification.

Prizes: 1st: £40.00, 2nd: £30.00, 3rd: £20.00, 4th: £18.00, 5th: £18.00, Total: £126.00.

Entry Fee = £18.00



CLASS 39B - PONY INTRO 90CM OPEN

Rule 408. Single Phase. Speed 325mpm. Start Height 90cm. **DRAWN ORDER**

For registered ponies in Grades: JA, JC & JD to be ridden by junior members. Horses (or ponies in pony competitions) may compete in one section only. In the event of insufficient entries lower prizes will be withheld. Rule - 76.6

British Showjumping Boots / Leg Protection Ruling applies to this class, in accordance with Rule 102.15.

Failure to comply will incur disqualification.

Prizes: 1st: £40.00, 2nd: £30.00, 3rd: £20.00, 4th: £18.00, 5th: £18.00, Total: £126.00.

Entry Fee = £18.00

CLASS 40 - WINTER 128CM FIRST ROUND/WINTER 138CM FIRST ROUND

Rule 514 & 512. Table A7. Speed 325mpm. Start Heights 1.05m / 1.10m. **DRAWN ORDER**

Horses (or ponies in pony competitions) may compete in one section only. In the event of insufficient entries lower prizes will be withheld. Rule - 76.6

- 138cm Section:

For registered ponies that have won 30 Points or more exceeding 128cms but not exceeding 138cms to be ridden by Junior Members (ages in accordance with Rule 77.12). Pony riders are not eligible to compete before the calendar year in which their 8th birthday is reached.

Qualifies for: Winter 138cms Second Round Competition.

Qualifying period: September to January.

Numbers to qualify: Two double clears (subject to revision).

- 128cm Section:





For registered ponies that have won 30 Points or more not exceeding 128cms to be ridden by Junior Members (ages in accordance with Rule 77.13). Junior riders are not eligible to compete before the calendar year in which their 8th birthday is reached.

Qualifies for: Winter 128cms Second Round Competition.

Qualifying period: September to January.

Numbers to qualify: Two double clears to qualify (subject to revision).

Dispensation will be given to run the Winter 128cms and Winter 138cms First Rounds as a handicap competition. If run as a Handicap, pony riders will be given dispensation to ride up to three ponies in each height section. This class will split in the event of 20 starters or more and two sets of prize money awarded.

No rider may ride more than three ponies in the same competition, in accordance with rule 77.6.

British Showjumping Boots / Leg Protection Ruling applies to this class, in accordance with Rule 102.15.

Failure to comply will incur disqualification.

Prizes: 1st: £50.00, 2nd: £35.00, 3rd: £25.00, 4th: £20.00, 5th: £20.00, Total: £150.00.

Entry Fee = £20.00



CLASS 41 PONY FOXHUNTER - FIRST ROUND/1.10M OPEN (BOTH TO INC. THE PONY RESTRICTED RIDER 1.10M QUALIFIER)

Rule 404 & 417. Single Phase. Speed 325mpm. Start Height 1.10m. **DRAWN ORDER**

In the event of 30 or more starters the class will be split, and two sets of prize money awarded. Horses (or ponies in pony competitions) may compete in one section only. In the event of insufficient entries lower prizes will be withheld. Rule - 76.6

- Pony Foxhunter First Round is for ponies in Grades JD and JC that have not won a total of 700 Points to be ridden by Junior Members.

Qualifies for: Pony Foxhunter Second Round. Qualifying period: 1st May-30th April inclusive. Numbers to qualify: Those ponies that jump a clear round in the first round, followed by a clear round in the jump-off in at least four First Round competitions held in the qualifying period will qualify to compete in the Second Round.

- The Open Section is for registered ponies in Grade JA, JC, JD to be ridden by Junior Members. Junior Members, in either the Open or the Foxhunter Section, who have not won more than a total of 350 Points in the previous calendar year are eligible for double clear qualification for the Pony Restricted Rider 1.10m Championship. Riders who have accrued points on the Pony Gold League are not eligible to compete in the Restricted Rider 1.10m Final.

Qualifying period: 1st May-30th April inclusive. Qualifies for: Four double clears will qualify for the Pony Restricted Rider 1.10m Championship to be held at the British Showjumping National Championships.

Qualification is pony/rider combination.

British Showjumping Boots / Leg Protection Ruling applies to this class, in accordance with Rule 102.15.

Failure to comply will incur disqualification.

Prizes: 1st: £50.00, 2nd: £35.00, 3rd: £25.00, 4th: £20.00, 5th: £20.00, Total: £150.00.

Entry Fee = £20.00

